



**Information Handbook
Under Right to Information
Act**



CENTRAL ROAD RESEARCH INSTITUTE
(Council of Scientific and Industrial Research)
New Delhi – 110 020
2005

Central Road Research Institute, New Delhi

(i) Particulars of Organisation, Functions & Duties :

Central Road Research Institute is one of the constituent units of the Council of Scientific & Industrial Research (CSIR), New Delhi, which is a publicly funded apex R&D organization of the country striving to generate new knowledge and new products, processes and new technologies in diversified fields of Science and Engineering.

Central Road Research Institute (CRRI), one of the prestigious Institute of CSIR, is particularly involved in fundamental and applied research on various aspects of road and road transportation covering Pavement Engineering, Geotechnical Engineering, Bridge Engineering, Traffic and Transportation including Safety and Environment, Highways Planning and Management as well as Instrumentation for Highways and Bridges. The Institute has been providing full range of R&D solutions and consultancy services towards reducing cost of vehicular operations while improving the quality of road traffic and surface transportation. The Institute is a nationally and internationally recognized center for training of highways and transportation professionals. The Institute provides sufficient opportunities for bright and talented candidates to share knowledge in an environment that spurs creativity and innovative skills to raise quality standards and offers rewarding career path in terms of participation in national / international seminars, government sponsored acclaimed foreign fellowships and time-bound assessment promotions to reach high levels on the scientific ladder. The organization structure is given in Annexure-I.

Objectives of CRRI :

The scientific & technical objectives of CRRI are :

- To develop specifications, labor intensive methods and manual aids for construction of low cost, all weather village roads for under developed regions of the country.
- To carry out basic and applied research, in line with the national priorities for investigation, construction and maintenance of different types of roads and runway, including related material such as aggregates, bitumen, cement, etc. with a view to effecting economy and achieving serviceability.
- To develop appropriate tools, machinery, equipment and instruments for adopting technologies as related to highway engineering and relevant to the country to achieve indigenous self-sufficiency.
- To carry out research on the performance of different types of roads under varying climatic and traffic conditions.

- To carry out research and development in all aspects of road traffic and transportation engineering, including study of accidents, development of road safety measure, psychology of road users and transportation economics as related to different forms of transport.
- To carry out research on utilisation of locally available materials for construction and maintenance of roads & runways economically.
- To render technical advice and consultancy services to various organisations in roads and related fields to avoid import of foreign expertise.
- To train road technologists through refresher courses, workshops and training programmes for wider application of indigenously developed technologies.
- To create and establish all the necessary infrastructure, both in equipment and expertise, in the various facets of highway and transportation engineering and allied subjects as and where needed to achieve judicious solutions for special problems.
- To develop and assist other institutions for scientific study of problems concerning roads, road transportation and related practices in particular regions.
- Publication of scientific and technical papers and special publications in journals, symposia, conferences, etc. devoted to scientific and applied research and developments in the connected fields.
- Establishment of linkages with other R&D institutions and units, etc. to further the scope of scientific and technological research and development in the connected fields and utilise the same for experimental studies.
- Demonstration and utilisation of the results of the research conducted by the institute for the development of highway and highway transportation engineering in the country.

(ii) Power and Duties of its officers/employees

The main duties of CRRI scientists are to carry out R&D on various facets of Highway Engineering and to help the profession by providing the technical services to the client. The job of technical staff is to provide needed technical support to the scientists in performing their duties. The Administration, Accounts and Purchase sections deal with administrative matters and give advice and support to R&D Divisions & Director of Institute in this regard.

(iii) Procedure of Decision Making / Accountability

The Head of the Institution is Director. Director is empowered with the authority for all administrative, financial and disciplinary matters. Most of the decisions to carry out day to day activities are being taken by the Director on the recommendations of various internal statutory committees constituted for the specific purpose as per the Rules and Regulations and Byelaws of CSIR. The Institute's activities encompass five research areas as below:

The areas are further divided into Divisions :

- (i) Bridges
- (ii) Geotechnical Engineering
- (iii) Pavement Engineering and Materials
- (iv) Road Development Planning & Management
- (v) Traffic & Transportation Planning & Engineering

Each Area is looked after by an Area Advisor and each Division is looked after by a Head of Division. Area Advisors assist the Director in policy decision making. Head of Divisions are responsible for implementation and execution of the decision taken by the competent authority. With regard to accountability, Project Leaders are accountable for all the issues pertaining to the project delivery and outputs.

(iv) Norms set by CRRI for the Discharge of Function

CRRI, an ISO : 9001 organisation, has formulated its Quality Policy which states “Institute is committed to customer satisfaction by providing globally acceptable R&D and professional consultancy services in the roads and transportation sector. CRRI ensures quality services through teamwork dedicated to the profession”

(v) Rules, Regulations, Instructions, Manuals and Records held by it or under its control or used by its employee for discharging its function :

CRRI is a constituent laboratory of CSIR, which is an autonomous body under Society Act. CSIR has adopted all Central Govt. CCS Rules and Regulations as per its Memorandum of Associates and Rules and Regulations and Bylaws as given in Annexure II, formulated by Govt of India for implementation in all its laboratories. Further, CSIR has also formulated its own guidelines and norms on various issues i.e. Technology Transfer and Utilisation of Knowledge Base, International Scientific collaboration, Recruitment Assessment & Promotion of Employees.

(vi) Statement of Categories of Documents that are held by CRRI or under its Control

Keeping in view the ISO requirements under Quality Management System, Quality System Procedures have been prepared for each major activity which are being followed by all project leaders and the team members. The Institute maintains progress of R&D achievements in the form of Technical Reports, Digest and Research Papers. The technical services available to clients are well documented and provided on demand on case to case basis. Besides, the Administration maintains personal file of staffs’ proceedings of all selections & recruitments made and minutes of internal committees meetings held from time to

time etc. Accounts Section maintains record of all payments made to its staff and details of expenses and receipts in the form of balance sheet. A computerised impact system i.e. IMPACT has been designed for this purpose. The Store and Purchase section maintains files and records and inventory of all equipments procured from time to time and its disposal, as necessary. The Main Store maintains records of all consumable purchases.

(vii) Particulars of arrangements that exist for consultation with, or representation by, the members of the public in relation to the formulation of its policy or implementation thereof :

The Institute organizes Scientists-Industry get-together, from time to time, for formulation of R&D priorities and plans with the participation of users from public and private sectors.

(viii) Statement on Councils, Committees Constituted as its part for the purpose of Advice :

CRRI is guided by two main committees i.e. Research Council (RC) for guidance on R&D and other policy related issues and Management Council (MC) for decisions on administrative and other general matters. The Research Council is headed by an eminent personality and members are drawn from industry and user agencies. The RC meets twice a year to take stock of R&D activities being pursued and gives advice and directions for future R&D work. The minutes of the meetings are well documented and are also circulated to all HODs for follow up action. An action taken report is presented and discussed in each subsequent RC meeting. The MC is headed by the Director with members from CRRI and other CSIR Labs. The MC meets thrice in a year.

(ix) Directory of Officers / Employees

The Institute maintains a computerized database of its personnel giving details such as post, pay scale, ID number, as given at Annexure-III & IV.

(x) Monthly Remuneration of Officers/Employees including system of compensation:

The details of monthly remuneration drawn by CRRI employees are given in Annexure-IV. As per CSIR regulation, a suitable mechanism for compensation to a staff member and his family has been formulated. A copy of the circular is given at Annexure-V.

(xi) Budget Allocation, Annual Plan and proposed expenditure.

CRRI receives its budget allocation from its parent organization i.e. CSIR. An annual plan is prepared every year. Likewise, five-year plans are also formulated and projections for future are worked out on plan to plan basis. CRRI does not disburse its budget. The budget statement of the year 2005 – 06 is enclosed as Annexure-VI

(xii) Details of Information Available to or held by CRRI in an electronic form.

R&D research results are published in the form of technical reports and technical papers in journals / conferences on regular basis. Institute brings out each year its Annual Report which gives R&D progress and other concomitant activities carried out during the year. It also contains information on publications, staff, budget, deputations abroad, marketable technologies ready for exploitation etc. The Annual Report is sent to user agencies on regular basis. Information of general use is also available on CRRI web site, <http://crridom.org> . Each division maintains index of all files and records in divisional secretariat for easy retrieval of information.

(xiii) Subsidy Programme etc.

CRRI has no subsidy programme.

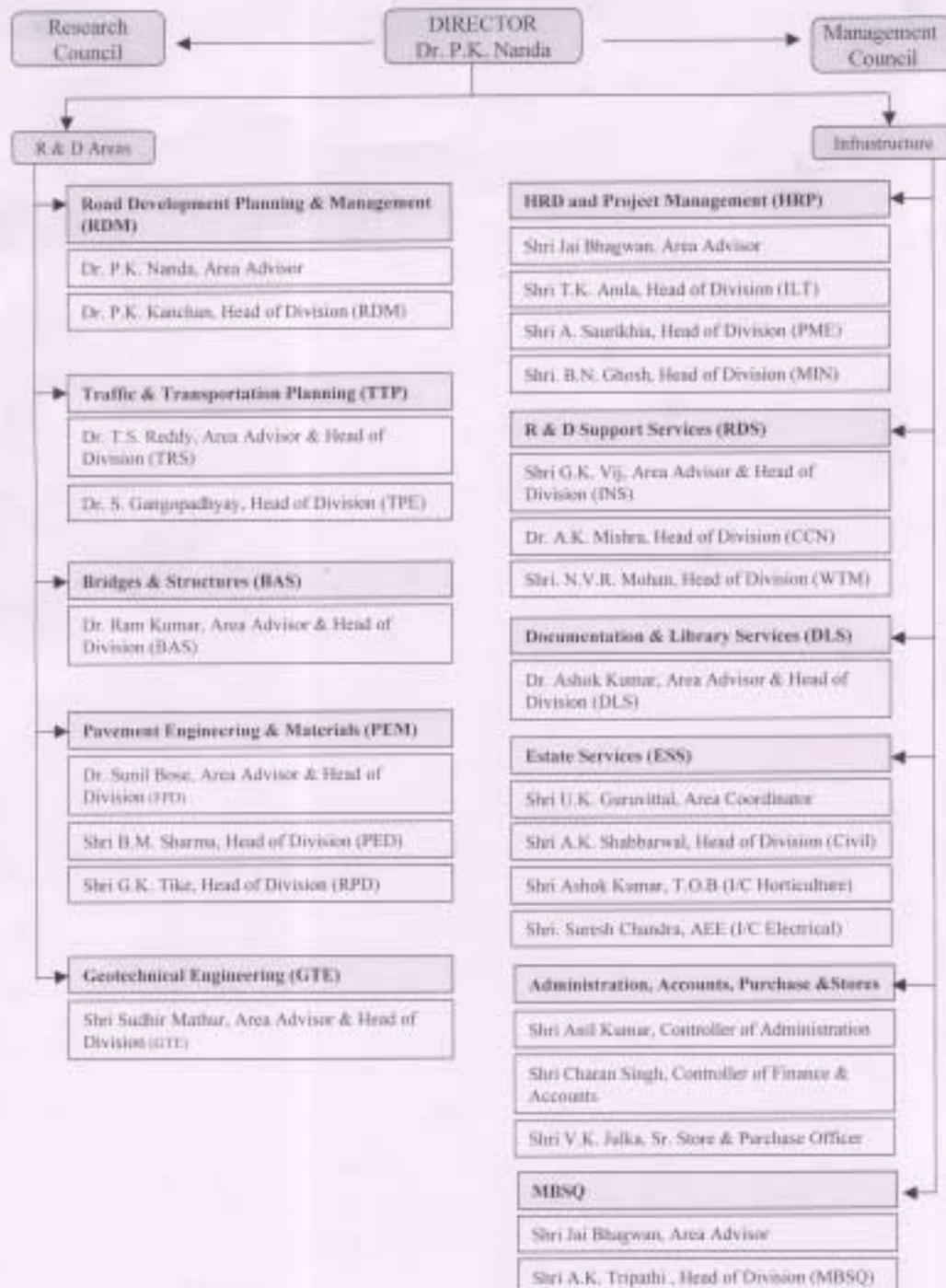
(xiv) Particular of Concessions, Permits or Authorisations Granted by it.

The CRRI gives license for commercial exploitation of process knowledge / intellectual property generated by the Institute.

(xv) The Particulars of Facilities/Expertise available to citizens for obtaining information :

The Institute provides a range of services for wider dissemination of information to general public. OPEN DAY(s) are organised for visit of students / public to CRRI from time to time. The Institute also participates in various exhibitions by depicting new R&D findings & technologies developed for awareness of the general public. The institute has a well-stocked library which can be accessed by students / researchers on all working days from 9.00 AM to 5.30 PM. Information on Institute's profile can also be downloaded from its website <http://www.crridom.org> . The Institute plans to update the document on yearly basis.

ORGANISATION



नियमावली
नियम और विनियम
तथा उपविधियां

MEMORANDUM OF ASSOCIATION

**RULES & REGULATIONS
AND BYE-LAWS**



वैज्ञानिक तथा औद्योगिक अनुसंधान परिषद्
नई दिल्ली

COUNCIL OF SCIENTIFIC & INDUSTRIAL RESEARCH

NEW DELHI

1999

ANNEXURE-III

EMP_ID	EMP_NAM	DESIGN	PAYSCALE
3	Neera Aggarwal Ms	TECH OFF B	8000-275-13500
4	Renu Chadda Ms.	TECH OFF C	10000-325-15200
6	Anita Arora Ms.	TECH OFF C	10000-325-15200
8	Pawan Chabbra Ms	DOC OFF E2	14300-400-18300
9	Rashmi Sharma Ms	HINDI TEACHER	5500-175-9000
10	Aroti Sen Gupta Ms	I(5)	5500-175-9000
11	Kamlesh Verma Ms	ASSTT(G) Gr.I	5500-175-9000
13	Savita Bhardwaj Ms	SCT E1	12000-375-16500
15	Prema Prasad	TECH OFF A	6500-200-10000
16	Rajrani Chopra	I(3)	3050-75-3950-80-4590
17	Kavita Jain Ms.	TA III(1)	4500-125-7000
18	Munni Devi Ms.	I(3)	3050-75-3950-80-4590
20	Nishi Mittal Dr.	SCT E2	14300-400-18300
22	Puspa Jaitly Ms.	STENO (Sr)	5500-175-9000
23	Neelima Chakrovorty Dr.	SCT E1	12000-375-16500
24	Tripta Kumari Ms.	I(3)	3050-75-3950-80-4590
26	Uma Arun Ms.	TECH OFF B	8000-275-13500
27	Shashi Chabra Ms.	TECH OFF A	6500-200-10000
28	Sunita Sindhu	ASSTT(G) Gr.I	5500-175-9000
29	Bhoga Balmiki Ms.	SAFAIWALA	2650-65-3300-70-4000
30	Saroj Gupta Dr.	SCT E2	14300-400-18300
34	Dev Dutt Sharma	I(4)	4500-125-7000
35	K C Mukund	TECH OFF A	6500-200-10000
36	Tek Chand	PEON	2650-65-3300-70-4000
38	MOHAN SINGH SAINI	I(4)	4500-125-7000
41	Ashok Pant	TG II(4)	5500-175-9000
44	Deepak Mukherjee	SCT E2	14300-400-18300
46	Y V Rao	TECH OFF C	10000-325-15200
48	Vinod Kumar	PEON	2650-65-3300-70-4000
49	Ram Badan Shah	CHOWKIDAR(ACP)	3050-75-3950-80-4590
52	Harcharan Singh	TECH OFF A	6500-200-10000
53	Ashok Kumar	STENO (Sr)	5500-175-9000
54	Ramesh Chand Sharma	ASSTT(G) Gr.I	5500-175-9000
55	Jagbir Prashed Bhatnagar	ASSTT(G) Gr.I	5500-175-9000
56	Narender Kumar	I(3)	3050-75-3950-80-4590
61	Deep Chand	I(2)	2650-65-3300-70-4000
62	Naresh Kumar Sharma	TECH OFF B	8000-275-13500
64	Prem Bahadur Thapa	BEARER	3050-75-3950-80-4590
68	V Murugesen	TG II(4)	5500-175-9000
72	Suraj	I(4)	4500-125-7000
74	Jagbir Singh	TG II(4)	5500-175-9000
75	Satander Kumar	SCT E2	14300-400-18300
77	Ashok Kumar	TECH OFF A	6500-200-10000
78	S K Dhingra	STENO (Jr)	4000-100-6000
79	Bijender Kumar	I(3)	3050-75-3950-80-4590
81	B Kangadurai	SCT E2	14300-400-18300
83	Lakhbinder Singh	TG II(4)	5500-175-9000

84	Gurdeep Singh	DRIVER	5500-175-9000
86	Randhir Singh	SECURITY ASSTT	2650-65-3300-70-4000
90	Dinesh Prakash	I(2)	2650-65-3300-70-4000
91	Manoj Kumar	ASSTT(G) Gr.II	4000-100-6000
92	Ram Pal	I(3)	3050-75-3950-80-4590
93	J B Sen Gupta	SCT E1	12000-375-16500
94	B S Nigam	TECH OFF A	6500-200-10000
96	Purushotam Lal Chauhan	ASSTT(G) Gr.II	4000-100-6000
100	Hukam Singh	CHOWKIDAR	2550-55-2660-60-3200
104	Vasant G Havangi	SCT E1	12000-375-16500
107	Mohd Irshad	TECH OFF A	6500-200-10000
108	Ishwar Singh	CHOWKIDAR	3050-75-3950-80-4500
111	Devender Kumar	TG II(4)	5500-175-9000
112	Bhawesh Paswan	HD A GUARD	3050-75-3950-80-4590
113	S K Gupta	TECH OFF A	6500-200-10000
115	Bishan Dass Sharma	ASSTT(G) Gr.II	4000-100-6000
118	Mohinder Chand	TECH OFF A	6500-200-10000
119	B K Chakravarty	TECH OFF A	6500-200-10000
121	Om Parkash	II(2)	4500-125-7000
122	R K Maheshwari Dr.	SCT E1	12000-375-16500
127	Yoginder Mehto	PEON	2550-55-2660-60-3200
128	Sat Pal Rana	II(4)	5500-175-9000
132	P K Nanda Dr.	DIRECTOR	18400-4500-22400
136	Ram Lal	I(4)	4500-125-7000
137	Madhu Sudan Singh	PEON	3050-75-3950-80-4590
138	A K Soni	TG II(4)	5500-175-9000
141	R K Malhotra	ASSTT(G) Gr.I	5500-175-9000
142	Bhoop Singh	TG II(4)	5500-175-9000
144	Harish Kumar	TG II(4)	5500-175-9000
145	Dhanji Prasad Verma	DRIVER(ACP)	3050-75-3950-80-4590
147	Sukumar Saha Dr.	SCT E1	12000-375-16500
148	Rajbir Singh	DRAFTSMAN	5500-175-9000
149	GAJAI SINGH BHIST	DAFTRY	3050-75-3950-80-4590
155	V V L K Roa Dr.	SCT E1	12000-375-16500
159	Ajai Pal Singh	TECH OFF A	6500-200-10000
160	Som Datt	ASSTT(G) Gr.I	5500-175-9000
161	Sher Singh	TECH OFF B	8000-275-13500
163	Gautam Pandey	BHISTI(ACP)	2650-65-3300-70-4000
168	Anil Kumar	I(2)	2650-65-3300-70-4000
169	S K Rishi	TG II(4)	5500-175-9000
173	A K Saini	ASSTT(G) Gr.I	5500-175-9000
174	Shiv Narain	BHISTI	2550-55-2660-60-3200
176	A K Gauba	STENO (Sr)	6500-200-10500
178	Narender Singh	ASSTT(G) Gr.I	5500-175-9000
184	Rajpat Singh	BEARER	3050-75-3950-88-4590
187	Kartar Singh	I(4)	4500-125-7000
188	P K Jain Dr	SCT F	16400-450-20000
194	Bir Singh	TECH OFF A	6500-200-10000
199	C M Kukreti	ASSTT(G) Gr.II	4000-100-6000
200	Aruna Dhamija	ASSTT(G) Gr.I	5500-175-9000

202	Sri Lal	PEON	3050-75-3950-80-4590
206	Daleep Mutreja	STENO (Sr)	5500-175-9000
208	Ajit Kumar Singh	PEON(ACP)	3050-75-3950-80-4590
209	Baldev Singh	TG II(4)	5500-175-9000
211	Mahipal Singh Rana	TG II(4)	5500-175-9000
212	S N Dwivedi	TECH OFF A	6500-200-10000
213	N K S Pundhir Dr.	SCT E1	12000-375-16500
215	T S Reddy Dr.	SCT G	18400-4500-22400
216	Beg Raj	TECH OFF B	8000-275-13500
217	Jamdar Mehto	I(4)	4500-125-7000
218	Rishi Pal Saini	TECH OFF B	8000-275-13500
219	Om Parkash	CHOWKIDAR	2650-65-3300-70-4000
220	Bhim Singh	DRIVER(ACP)	3050-75-3950-80-4590
221	P V Pradeep Kumar	SCT E1	12000-375-16500
222	Sudhir Mathur	SCT F	16400-450-20000
226	S K Ummat	TECH OFF A	6500-200-10000
228	Ashok Kumar	TECH OFF A	6500-200-10000
231	G K Tike	SCT E2	14300-400-18300
234	Jeet Ram	I(4)	4500-125-7000
235	K Sitaramanjaneyulu	SCT E1	12000-375-16500
237	Sushil Kumar	TECH OFF B	8000-275-13500
238	O P Yadav	SCT E2	14300-400-18300
240	Narender Kumar Sakkarwal	TECH OFF A	6500-200-10000
241	Surinder Singh	DRAFTSMAN	5500-175-9000
242	Jag Lal Mehto	I(2)	2650-65-3300-70-4000
244	Babban Singh	TG II(4)	5500-175-9000
245	Raj Kishore Mehto	I(3)	3050-75-3950-80-4590
248	Bhawar Singh	I(4)	4500-125-7000
250	Subhash Chander	TA III(2)	5500-175-9000
251	Rabindra Nath Dutta	SCT E1	12000-375-16500
254	Rajbir Singh	I(4)	4500-125-7000
255	Ashok Kumar	TECH OFF A	6500-200-10000
257	Babu Lal	I(4)	4500-125-7000
262	R C Pardesi	TECH OFF A	6500-200-10000
263	Narain Singh	DRIVER	5500-175-9000
268	Satish Kumar	I(3)	3050-75-3950-80-4590
269	T D Raghav	TECH OFF E1	12000-375-16500
270	P K Kanchan Dr.	SCT F	16400-450-20000
271	V K Bhambota	ASSTT(G) Gr.I	5500-175-9000
272	R S Bharadwaj	SCT E2	14300-400-18300
275	Ram Gopal	I(3)	3050-75-3950-80-4590
279	Jiwan Lal	TG VII	5500-175-9000
281	Lalanji Sahay	TG II(4)	5500-175-9000
284	Mitthan Lal	I(3)	3050-75-3950-80-4590
287	P Prasana Kumar	SCT E2	14300-400-18300
288	B M Sharma	SCT E2	14300-400-18300
289	Dharam Vir	I(4)	4500-125-7000
291	Madan Pal Singh	TECH OFF C	10000-325-15200
292	M Mohamed Ali Sahib	SCT E2	14300-400-18300
293	Rajveer Singh	I(4)	4500-125-7000

294	Mahinder P Singh	I(4)	4500-125-7000
300	Surinder Mohan	SCT E2	14300-400-18300
301	Sunil Chandra Saha	TG II(2)	3050-75-3950-80-4590
303	R N Paswan	TECH OFF A	6500-200-10000
304	Jaswant Singh	ASSTT(S&P) Gr.I	5500-175-9000
305	Suresh Chandra	ASST ENGG.	6500-200-10000
307	Sohan Lal	I(4)	4500-125-7000
308	Chinta Mani	CHOWKIDAR	2650-65-3300-70-4000
311	G K Vij	SCT F	16400-450-20000
312	Ibrahim Shariff	TG II(4)	5500-175-9000
314	Balbir Singh	WASH BOY	2550-55-2660-60-3540
316	Ram Pal	TECH OFF E1	12000-375-16500
319	Raj Pal Singh Gautam	I(2)	2650-65-3300-70-4000
321	Hari Chand	SAFAIWALA	2550-55-2660-60-3540
323	N K Sharma	TECH OFF C	10000-325-15200
325	Girraj Sharma	HALWAI	3050-75-3950-80-4590
326	Phool Singh	I(4)	4500-125-7000
328	S K Sharma	TECH OFF E2	14300-400-18300
331	V K Sood Dr.	SCT G	18400-4500-22400
333	Surinder Kumar	I(3)	2650-65-3300-70-4000
334	Maharaj Singh	ASSTT(F&A)	5500-175-9000
337	Vijay Singh	I(4)	4500-125-7000
339	Atar Singh	TECH OFF C	10000-325-15200
340	Baldev Raj Talwar	ASSTT(G) Gr.II	4000-100-6000
341	Jagdish Singh	TG II(4)	5500-175-9000
342	A K Tripathi	TECH OFF A	6500-200-10000
343	Jagdish	PEON	2650-65-3300-70-4000
344	R K Srivastava	SCT E1	12000-375-16500
345	A N Ramalingaiah	SCT F	16400-450-20000
347	Ramesh Rao	TEA MAKER	2550-55-2660-60-3200
348	Rajinder	WASH BOY	2550-55-2660-60-3200
349	S K Biswas	DRAFTSMAN	5500-175-9000
350	Sobha Ram	TG II(4)	5500-175-9000
353	Tek Chand	I(4)	4500-125-7000
354	Ashok Kumar	TECH OFF A	6500-200-10000
355	Y C Tiwari	SCT E1	12000-375-16500
357	T K Amla	SCT E2	14300-400-18300
359	Sunil Datt	DRIVER	3050-75-3950-80-4590
360	Kanwar Singh	SCT B	8000-275-13500
363	Fuljan Tete	I(2)	2650-65-3300-70-4000
364	N V R Mohan	SCT E2	14300-400-18300
365	Sam Kurian	ASSTT(G) Gr.I	5500-175-9000
367	Guru Vittal	SCT E1	12000-375-16500
370	S Gangopadhyay Dr.	SCT F	16400-450-20000
371	Anil Kumar	ASSTT(G) Gr.I	5500-175-9000
372	K J S Kapoor	TECH OFF A	6500-200-10000
373	Veena Verma Ms	ASSTT(G) Gr.I	5500-175-9000
381	Vijender Kumar	PEON(ACP)	3050-75-3950-80-4590
383	Vijay Kumar Marwaha	ASSTT(G) Gr.I	5500-175-9000
386	Y N Kaul	DRAFTSMAN	5500-175-9000

388	Sushma Behl Ms.	I(3)	3050-75-3950-80-4590
390	Anuradha Shukla	SCT E2	14300-400-18300
391	Neelam Kumari	ASSTT(G) Gr.II	4000-100-6000
392	Madhu Bala	ASSTT(G) Gr.I	5500-175-9000
393	Pushpa Verma Ms.	STENO (Sr)	5500-175-9000
394	Purnima M Parida Ms.	SCT C	10000-325-15200
395	Shanta Kumar Ms.	TECH OFF A	6500-200-10000
401	S Kannan	TECH OFF A	6500-200-10000
403	R C Dass	I(4)	4500-125-7000
404	Jai Singh	ASSTT(S&P) Gr.I	6500-200-10500
405	Bhupinder S Batra	STENO (Sr)	5500-175-9000
407	Ajay Kumar Sabharwall	SUP. ENGG.	12000-375-16500
409	Sunil Jain	SCT E1	12000-375-16500
411	S P Pokhriyal	SCT E2	14300-400-18300
417	Jille Ram	I(2)	2650-65-3300-70-4000
418	Chander Bhan	TG II(4)	5500-175-9000
419	S D Sharma Dr.	SCT E2	14300-400-18300
420	Niraj Sharma	SCT C	10000-325-15200
422	Harish Kumar	PLUMBER	3050-75-3950-80-4590
424	G C Lohani	STENO (Sr)	5500-175-9000
429	Mohon Lal	I(2)	2650-65-3300-70-4000
430	Shababuddin Khan	CARPENTER	3050-75-3950-80-4590
434	Sheonandan Parshad	PLUMBER	3050-75-3950-80-4590
435	Shashi Kumar Soni	SCT E1	12000-375-16500
440	Hari Ram	I(4)	4500-125-7000
443	Santosh Jalihal	SCT E1	12000-375-16500
444	Pratap Singh	DRIVER	5500-175-9000
448	Hira Lal Sachdeva	MECHANIC	3050-75-3950-80-4590
449	A K Bhardwaj	TECH OFF E1	12000-375-16500
450	S K Sridhar	TECH OFF A	6500-200-10000
458	D Mukhopadhyaya Dr.	SCT E2	14300-400-18300
460	Raj Kishore Panigrahi	SCT C	10000-325-15200
464	Sulata Kayal Dr.	SCT E2	14300-400-18300
465	Narinder Kumar	TECH OFF A	6500-200-10000
466	R K Swami	SCT E1	12000-375-16500
468	M N Nagabhushana	SCT C	10000-325-15200
469	C Kamraj	TECH OFF A	6500-200-10000
472	Sangita Dr.	SCT E1	12000-375-16500
475	Prithvi Raj Singh	TG II(4)	5500-175-9000
477	Ved Parkash	TG II	3050-75-3950-80-4590
478	Tek Chand Thapa	PEON	3050-75-3950-80-4590
479	Dinesh Kumar	PEON	2550-55-2660-60-3200
481	Sudesh Kumar	SCT E1	12000-375-16500
482	Laliteshwar	STENO (Jr)	4000-100-6000
483	Jai Bhagwan	SCT E2	14300-400-18300
485	Krishna Paswan	ASSTT(G) Gr.I	5500-175-9000
486	K Rama Ch Panicker	DRIVER	3050-75-3950-80-4590
488	Braham Prakash	I(4)	4500-125-7000
489	Hoshiar Singh	DAFTRY	3050-75-3950-80-4590
490	Satish Kumar	STENO (Sr)	5500-175-9000

492	Kishore Kumar Dr	SCT E2	14300-400-18300
493	Gore Lal Paswan	I(4)	4500-125-7000
494	Dal Chand	I(4)	4500-125-7000
495	Alind Sexena	TECH OFF A	6500-200-10000
496	Brij Mohan Singh	CHOWKIDAR	2650-65-3300-70-4000
498	R K Bajpai	SCT F	16400-450-20000
499	Ravinder Kumar	TECH OFF A	6500-200-10000
500	Jai Prakash	I(4)	4500-125-7000
503	A K Mishra Dr	SCT E2	14300-400-18300
504	Renu Mathur Dr. Ms.	SCT E2	14300-400-18300
505	Santosh Khuttan	STENO (Sr)	5500-175-9000
516	Anil Singh Dr	SCT E2	14300-400-18300
519	R C Agarwal	TECH OFFICER C	10000-325-15200
520	Vikram Singh	I(4)	4500-125-7000
521	B N Ghosh	TECH OFF E1	12000-375-16500
523	Hem Kumar	PEON	2550-55-2660-60-3200
525	P K Jain	SCT E2	14300-400-18300
526	S P Gautam	TECH OFF A	6500-200-10000
527	Ram Kishan	CHOWKIDAR	2550-55-2660-60-3200
530	Devesh Tiwari	SCT E1	12000-375-16500
531	Phool Chandra	ASSTT(G) Gr.I	5500-175-9000
532	Kunjumol B Verghese Ms.	ASSTT(G) Gr.II	4000-100-6000
533	Balvir Singh	I(4)	4500-125-7000
535	Daya Ram	II(2)	4500-125-7000
536	Asif Hussain Choudhary	I(2)	2550-55-2660-60-3200
537	Amin Ali Khan	II(2)	4500-125-7000
538	Sanjay Kumar	II(2)	4500-125-7000
539	Nihendra Singh	II(2)	4500-125-7000
540	Satyabir Singh	II(2)	4500-125-7000
541	Ram Singh	FRASH (HEAD)	3050-75-3950-80-4590
545	H H Suthar	TECH OFF E1	12000-375-16500
547	Ramesh Chander	DRAFTSMAN	4500-125-7000
548	Dindayal	SCT E1	12000-375-16500
549	Hari Om	I(4)	4500-125-7000
552	S Velmurugan Dr.	SCT E1	12000-375-16500
561	R Rangarajan	TG II(4)	5500-175-9000
562	Anang Pal Dr	HINDI OFFICER	6500-200-10500
563	Hawa Singh	TECH OFF A	6500-200-10000
567	Sunil Bose Dr	SCT F	16400-450-20000
571	U Srinivas Rao	SCT E1	12000-375-16500
574	Sarita Restogi	TECH OFF A	6500-200-10000
580	K Bairagi	ASSTT(S&P)Gr II	4000-100-6000
582	P Pramada Valli (Dr.) Ms.	SCT E1	12000-375-16500
583	Subhash Chand	SCT C	10000-325-15200
585	S C Dass	TECH OFF A	6500-200-10000
588	Des Raj	PEON	2550-55-2660-60-3200
590	Satish Kumar	TECH OFF C	10000-325-15200
591	Kishan Swroop	MECHANIC ELEC.	4500-125-7000
600	Anil Kumar	ASSTT(G) Gr.I	4000-100-6000
602	Sanjay Choudhary	H TRANSLATOR	5000-150-8000

604	Dharam Pal	PEON	2550-55-2660-60-3200
617	Ashok Kumar Sagar	SCT C	10000-325-15200
620	Karuna Saini Ms.	STENO (Jr)	4000-100-6000
621	Sarita Sethi	STENO (Jr)	4000-100-6000
624	Rakesh Kumar	STENO (Jr)	4000-100-6000
627	Vijai Kumar Kanaujia	TECH OFF A	6500-200-10000
628	Mukesh Kumar	ASSTT. ENGG	6500-200-10000
630	Rajan Tirkey	ASSTT(G) Gr.I	5500-175-9000
632	Babu Lal Meena	DRIVER	3050-75-3950-80-4590
634	Lalita Jangpangi Ms.	SCT C	10000-325-15200
635	Om Kumar	TG II	4500-125-7000
636	B Rajasekher	TA III(2)	5500-175-9000
645	Bhajan Singh	STENO (Jr)	4000-100-6000
656	SRIRAM MAHTO	PEON	2550-55-2660-60-3200
666	Reeta Rani	TA III(2)	5500-175-9000
667	Pardeep Kumar	TA III(2)	5500-175-9000
668	Prashant Kumar	TA III(2)	5500-175-9000
669	Asha Rani Ms.	TA III(2)	5500-175-9000
670	Gajender Kumar	TA III(2)	5500-175-9000
671	Kamini Gupta Ms.	TA III(2)	5500-175-9000
674	Usha Kiran Ms.	TECH OFF A	6500-200-10000
676	Nasim Akhtar	SCT C	10000-325-15200
677	Shankha Das	TA III(2)	5500-175-9000
679	Ambrish Saurikhia	SCT C	10000-325-15200
680	Ajay Kumar Jain	SCT C	10000-325-15200
682	Ravinder Deekonda	TA III(2)	5500-175-9000
684	Pradeep Kumar	SCT C	10000-325-15200
686	Binod Kumar	SCT C	10000-325-15200
689	Kirti Bhandari	SCT B	8000-275-13500
690	Pankaj Gupta Dr.	SCT C	10000-325-15200
693	Ravinder Kumar	SCT C	10000-325-15200
694	Sunil Grover	TA III(2)	5500-175-9000
695	Girish Sharma	TA III(2)	5500-175-9000
696	Alok Ranjan	SCT B	8000-275-13500
697	Krishna Murthy	SCT B	8000-275-13500
700	Neelam Jain Dr	SCT C	10000-325-15200
701	Farhat Ali Azad	SCT B	8000-275-13500
703	B Srinivas Rao	SCT C	10000-325-15200
707	Rakesh Kumar (dr.)	SCT C	10000-325-15200
708	R Manisekar	SCT C	10000-325-15200
710	Manoj Kumar Shukla	SCT B	8000-275-13500
711	Madhu Errampalli	SCT B	8000-275-13500
713	Honey Gupta	SCT B	8000-275-13500
715	Sumer Singh Chhachhia	ASSTT(S&P) Gr.I	5500-175-9000
716	Pankaj Goel	TA III(2)	5500-175-9000
722	Pawan Kumar	SCT C	10000-325-15200
723	K V Ganesh Babu	SCT B	8000-275-13500
725	Amutha Arunachalam Ms.	TECH OFF C	10000-325-15200
726	M A Joseph	SCT C	10000-325-15200
727	Rajiv Kumar Chopra	ASSTT(G) Gr.II	4000-100-6000

728	Sumitra Bai Ms.	PEON	2550-55-2660-60-3200
730	Abhinav Sharma	ASSTT(G) Gr.II	4000-100-6000
734	Sanjay Rawat	ASSTT(G) Gr.I	5500-175-9000
736	Priti Sachdeva	RECEPTIONIST	4500-125-7000
741	R L Lohia		6500-200-10000
742	Anil Kumar Sinha	SCT B	8000-275-13500
743	Bhagwan Singh	SCT B	8000-275-13500
744	Kamlesh Kapoor	ASSTT(G) Gr.II	4000-100-6000
746	A.mohan Rao	SCT B	8000-275-13500
747	I.prasada Rao	SCT B	8000-275-13500
748	Praveen Bhatia	ASSTT(G) Gr.II	4000-100-6000
749	Kayitha Ravinder	SCT B	8000-275-13500
751	Surla Satyam Naidu	SCT B	8000-275-13500
752	Jakkula Nataraju	SCT B	8000-275-13500
754	Sridhar Raju	SCT B	8000-275-13500
755	Sunita Saini Ms.	I(1)	2550-55-2660-60-3200
757	Santosh	PEON	2550-55-2660-60-3200
759	Sanjay Deori	SCT B	8000-275-13500
761	Rajbir Singh	G.H. ATTENDENT	2550-55-2600-60-3200
762	Chet Narain	G.H. ATTENDENT	2550-55-2600-60-3200
763	Keshav Ram Acharya	G.H. ATTENDENT	2550-55-2600-60-3200
764	Rajesh Bariya	G.H. ATTENDENT	2550-55-2600-60-3200
766	Vinod Kumar Tyagi	ASSTT.ENGNEER	6500-200-10500
770	Suresh Prasad Thakur	I(1)	2550-55-2660-60-3200
771	Raj Bala Ms.	PEON	2550-55-2660-60-3200
772	Shiv Lal	I(1)	2550-55-2660-60-3200
773	Prem Chand	I(1)	2550-55-2660-60-3200
778	Sant Ram	I(1)	2550-55-2660-60-3200
779	Raja Lal Manjhi	I(1)	2550-55-2660-60-3200
781	R C Joon	SO	6500-200-10500
786	Shakuntla Devi Ms.	PEON	2550-55-2660-60-3200
791	Sunil Kumar	DRIVER(NT)	3050-75-3950-80-4590
793	Nitesh Kumar	SCT B	8000-275-13500
795	VIJAY KUMAR	STENO (Jr)	4000-100-6000
796	Karam Singh	PEON	2550-55-2660-60-3200
799	D V Singh	TECH OFF A	6500-200-10000
802	D C Sharma	SCT E1	12000-375-16500
803	W P Singh	TECH OFF A	6500-200-10000
804	Gurmeet Singh	STENO (Jr)	4000-100-6000
805	Sumitra Devi Ms.	PEON	2550-55-2660-60-3200
808	Fariyad Ali	TECH OFF A	6500-200-10000
812	Rajeev Kumar Garg Dr.	SCT E2	14300-400-18300
813	S S Gaharwar	SCT E1	12000-375-16500
814	Murari Lal Meena	PEON	2550-55-2660-60-3200
815	A K Sachdeva	ASSTT(G) Gr.I	5500-175-9000
816	A Khan	STENO (Sr)(APC)	6500-200-10500
817	Yogender Kumar	TA III(2)	5500-175-9000
818	P Lakshmy	SCT E2	14300-400-18300
820	Kailash Kumar	GROUP-D (TEMP)	2550-55-2600-3200
823	Chalumuri Ravi Sekhar	SCT B	8000-275-13500

824	Sanghapriya H. Kamble (Ms)	SCT B	8000-275-13500
825	Pulikanti Subramanya Prasad	SCT B	8000-275-13500
826	Mukesh Kumar Meena	SCT B	8000-275-13500
827	Ashok Kumar Dr.	SCT E2	14300-400-18300
828	Ram Kumar Dr.	SCT F	16400-450-20000
829	Pawan Sameer Lakra	ASSTT(G) Gr.II	4000-100-6000
831	Subodh Kumar	SCT C	10000-325-15200
833	Kiran Pal	PEON	2550-55-2660-60-3200
834	Tara Chand	TA III(1)	4500-125-7000
836	Kumar Shashi Bhushan	TA III(1)	4500-125-7000
837	Chander Kant	ASSTT(G) Gr.I	5500-175-9000
839	K.Chinna Reddy	TA III(1)	4500-125-7000
842	Rekha Sharma Dr.	SCT E2	14300-400-18300
847	G K Sahu	SCT E1	12000-375-16500
859	L D Kukreja	PS	6500-200-10500
863	V K Julka	SPO	10000-325-15200
867	MUNI RAJ MEENA	TA III(2)	5500-175-9000
868	Yash Pal	SO(F&A)	6500-200-10500
869	Satinder Kaur	ASSTT(G) Gr.I	5500-175-9000
884	Suraj Parkash Dr.	SCT C	10000-325-15200
886	P R N Nayar	TEHC OFF C	10000-325-15200
887	Sunil Kumar	STENO (Sr)	6500-200-10500
888	Dharam Singh	Caretaker	5500-175-9000
889	Anil Kumar	COA	12000-375-16500
890	RAJEEV GOEL	SCT C	10000-325-15200
891	Vandana D Singh Ms.	SO	6500-200-10500
892	Nidhi Agarwal Ms.	TA III(1)	4500-125-7000
893	Silvenus Xess	Dy SPO	6500-200-10500
894	RAVINDER PAL SINGH	SO	6500-200-10500
895	Charan Singh	Dy.F&A(SG)	12000-375-16500
896	R Raja	ASSTT(G) Gr.I	5500-175-9000
897	Vinod Kumar	PS	6500-200-10500
898	Huidrom Lokeshwar Singh	TA III(1)	4500-125-7000
899	Kewal Krishan Gola	TA III(1)	4500-125-7000
900	Bhola Mehto	TECH OFF A	6500-200-10000
901	R. Naveen Kumar	TA III(2)	5500-175-9000
902	Dharmendra Jaiswal	TA III(1)	4500-125-7000
904	S.Mariappan	Tech Off A	6500-200-10500
905	P C Meshram	Tech Off B	8000-275-13500
907	Nita Kumari Ms.	ASSTT(G) Gr.I	5500-175-9000
908	Kamlesh Kumari Ms	Cook	3050-4590
910	Asha Sharma	SCT E2	14300-400-18300
911	V P Tatia	SCT E1	12000-375-16500
912	V P Sharma	TECH OFF A	6500-200-10000
913	Gurmeet Singh	TECH OFF A	6500-200-10000
914	Satnam Singh	TG II(4)	5500-175-9000
915	J.K.GOYAL	SCT E1	12000-375-16500
926	SUNIL KHANNA	Dy SPO	6500-200-10500

वैज्ञानिक तथा औद्योगिक अनुसंधान परिषद्
COUNCIL OF SCIENTIFIC AND INDUSTRIAL RESEARCH

अनुसंधान भवन, 2 राजी मार्ग, नई दिल्ली-110 001
Anusandhan Bhavan, 2 Raji Marg, New Delhi-110001

Telephone
Fax: 81-11-3714788
Gram: CON/SEARCH
Telex: 031-66232 CSIR IN
031-66147 CSIR IN
Email: csirhq@silnet2.ernet.in

No. 9(223)/97-E.III

Dated: 17th Oct., 1997.

From
संयुक्त सचिव (प्रशासन)
Joint Secretary (Admn.)
To

~~Heads of All National Labs./Instit.~~

Subject:- CSIR Relief Scheme, 1997

Sir,

The Governing Body of CSIR in its 143rd meeting held on 10th June, 1997 has approved "The CSIR Relief Scheme, 1997" which provides for grant of financial relief to employee or his family in the event of his death or disability due to mishap occurring while on duty. A copy of the scheme is enclosed herewith.

The scheme will come into operation with effect from the date of issue of this letter.

Yours faithfully,

(R.S. ANTIL)
DEPUTY SECRETARY
Ph. 3715258

Encs: As Above

केंद्रीय सचिव, अनुसंधान संस्थान
नई दिल्ली

संख्या: 2883/97-बी.एस.

दिनांक: 11.10.97

प्रति सूचना, सर्व दर्शन तथा अनुपस्थित यथा प्रसन्न के लिए बहिष्कृत है।

प्रति

1. सभी प्रभार (अनुभाग के प्रभार)
2. निदेशक महोदय के निजी सचिव।

(वेद प्रकाश)
संयुक्त सचिव

THE CSIR RELIEF SCHEME

1. Title, Commencement And Application : This Scheme shall be called "The CSIR Relief Scheme 1997".

It shall come into force w.e.f. 17th Oct, 1997.

The Scheme shall apply to all the employees of CSIR as defined in para (3) except those who opt not to be member of the scheme within one month from the date of its notification.

2. Aim And Objective : The aim and objective of this Scheme is to grant financial relief to the Council employees or their families in case of injury to or death of the employee while on Council duty.

3. Definition :

(a) "Employee" means:-

- i) Persons borne on regular establishment of CSIR.
- ii) Casual workers who have been conferred temporary status under the CSIR Scheme.
- iii) Persons appointed on deputation / foreign service terms in CSIR

Provided that where there is a similar scheme in the parent department of an employee on deputation or foreign service terms in CSIR, such employee or his family shall have option to either claim Relief under this Scheme or under the scheme of his parent department.

(b) "Accident" means a mishap while on duty or during journey to and from the place of work or any activity connected with official work.

(c) "Injury" means injury from violence or accident resulting in death or disability as mentioned in Schedule-I or any other medical disability as certified by the appropriate Medical Authority.

(d) "Date Of Injury" means in the case of accident or violence the actual date on which the injury is sustained or such date not being later than the date of the report of the appropriate Medical Authority.

4

(e) "Violence" means the act of a person(s) by which injury to or death of a council employee is caused:-

- i) by assaulting or resisting the employee in the discharge of his duties or in order to deter or prevent him from performing his duties; or
- ii) because of anything done or attempted to be done by the council employee or by any other public servant in lawful discharge of his duty as such; or
- iii) because of official position of the council employee.

(f) "Competent Authority" means Director-General, CSIR or any other officer authorised by him in this behalf.

(g) "Appropriate Medical Authority" means an authority within the meaning of EOP Rules .

4. Entitlement: When a Council employee dies due to injury caused by accident or violence, the spouse/children/parents etc. shall be entitled to Relief in accordance with para-7. In the event of the employee sustaining injury he shall be entitled to Relief mentioned in para 9. The relief payable under this Scheme shall be over and above any other benefit admissible to the employee under the rules.

5. Condition For Payment Of Relief:-

- a) No Relief under this Scheme shall be paid except with the sanction of the competent authority.
- b) No claim for relief shall be entertained unless:-
 - i) intimation of accident has been given in the manner provided in the Scheme; and
 - ii) the claim is submitted in the prescribed form within three months from the date of injury or death.

In exceptional cases, DGCSIR may at his discretion entertain claim for Relief under this Scheme if he is satisfied that there are sufficient reasons for the failure to intimate or submit the claim in time .

6. Determination of Disability:- The percentage of disability due to injury shall be as specified in Schedule I of EOP Rules failing that, as certified by the appropriate Medical Authority.
- 4

5

To Whom Payable: In the event of death of a council employee the amount of Relief shall be paid as per the nomination given by him. He shall have right to change the nomination any time during his service. If no nomination has been given, the amount of relief shall be paid to the following in order of preferences:-

- i) Spouse
- ii) Sons and unmarried and widowed daughters (in case of minor sons and daughters, through the guardian).
- iii) Father and mother, of the employee (in case of married female employee not survived by husband or children, to father-in-law & mother-in-law or in their absence, to her father and mother).

8. Procedure for Claim:- In the event of death of or injury to an employee claim for Relief under the Scheme shall be submitted in the prescribed form to the Head of the concerned Lab./Instit. (to JS(A) in case of CSIR Hqrs.) duly supported by the following documents:-

- (a) In the case of injury due to accident or violence resulting in loss of limb(s)/eye(s) etc.,
 - i) a complete statement of the circumstances in which the injury was caused together with statements of eye witnesses, if any;
 - ii) Police Report;
 - iii) Hospital certificate duly signed by the appropriate Medical Authority/Board.
- (b) In the case of death due to accident or violence,
 - Jan 11* i) Death certificate from the appropriate local authority registering deaths/births;
 - Jan 11* ii) Postmortem certificate / Police Report / Panchanama. (Postmortem report may not be insisted upon if satisfactory documentary evidence for the cause of death due to accident or violence is available.)
- (c) All such claims shall be forwarded to CSIR Hqrs. by the concerned Head of Lab./ Instit. for consideration/sanction by DG, CSIR.

9. Quantum Of Compensation:

- a) In case of Death or total permanent disability } Rs. 2.5 lakhs
- b) In case of partial permanent disablement. } In proportion to disability specified in Schedule-I.

Provided that if the disablement results in death of the employee the amount of relief paid for such, disablement shall be adjusted against the amount payable in the event of death.

In case of death or injury necessitating hospitalisation for a minimum period of 10 days interim payment of RS. 5,000/- shall be made by the Head of Lab./Instt. (JS (A) in case of CSIR Hqrs.) to the nominee of the employee, which will be adjusted against the final payment.

In case of death at a station away from the Hqrs. of the employee expenditure for onward and return journey by air and at places not connected by air, by rail/road the actual expenditure will be reimbursed in respect of Maximum of two close relatives of the employee, subject to production of Bills/Receipts etc. In addition, reimbursement of expenditure towards boarding and lodging for a maximum of two close relatives will be admissible at the outside station. In case the dead body is to be brought for cremation/burial at the Hqrs. of the deceased employee reimbursement of expenditure towards embalming and other incidental expenditure will also be admissible. In case the accident occurs at a place away from the Hqrs. requiring hospitalisation at that station and the gravity of the injury so warrants, expenditure for visit of maximum of two close relatives by rail limited to first class/AC 2-Tier and for boarding and lodging will be reimbursed to the employee. the claim will have to be supported by bills/receipts, etc.

DG, CSIR may also sanction a sum of Rs. 10,000/- to an employee in the case of 100% permanent disablement for provision of purchase of prosthesis, conveyance for handicapped and/ or other equipment, if necessary and not reimbursable under CS(Medical Attendance) Rules. This will be a one time grant and will be in addition to the relief sanctioned under the scheme.

10. Source of Payment:

7

- a) Payment under this scheme shall be met from the CSIR Welfare Fund.
- b) Each member of the Scheme shall contribute to the Relief Fund @ Rs. 5/- per month which shall be deducted from his monthly salary and remitted by each Lab./Instt. to CSIR Welfare Fund.

11. Interpretation And Power Of Relaxation: Where any doubt arises as to interpretation of any provisions of this Scheme, the matter shall be referred to the Director - General, CSIR, whose decision shall be final and binding.

Director-General, CSIR may at his discretion relax any of the provisions of this Scheme.

7

SCHEDULE I

PART I
List of Injuries deemed to result in
Permanent Total Disablement

Sl. No	Description of Injury	Percentage of loss of earning capacity
1	Loss of both hands or amputation at higher sites	100
2	Loss of a hand and a foot	100
3	Double amputation through leg to thigh, or amputation through leg or thigh on one side and loss of other foot	100
4	Loss of sight to such an extent as to render to claimant unable to perform any work for which eye - sight is essential	100
5	Very severe facial disfigurement	100
6	Absolute deafness	100

PART II
List of Injuries deemed to result in
Permanent Partial Disablement
AMPUTATION CASES - UPPER LIMBS
(either arm)

1	Amputation through shoulder joint	90
2	Amputation below shoulder with stump less than 8" from tip of acromion	80
3	Amputation from 8" from tip of acromion to less than $4\frac{1}{2}$ " below tip of olecranon	70
4	Loss of a hand or of the thumb and four fingers of one hand or amputation from $4\frac{1}{2}$ " below tip of olecranon	60
5	Loss of thumb	30
6	Loss of thumb and its metacarpal bone	40
7	Loss of four fingers of one hand	50
8	Loss of three fingers of one hand	30
9	Loss of two fingers of one hand	20
10	Loss of terminal phalanx of thumb	20

AMPUTATION CASES - LOWER LIMBS

11	Amputation of both feet resulting in end - bearing stumps	90
12	Amputation through both feet proximal to the metatarsal phalangeal joint	80
13	Loss of all toes of both feet through the metatarsal phalangeal joint	40
14	Loss of all toes of both feet proximal to the proximal interphalangeal joint	30
15	Loss of all toes of both feet distal to the proximal interphalangeal joint	20
16	Amputation of hip	90
17	Amputation below hip with stump not exceeding 5" in length measured from tip of great trochanter	90
18	Amputation below hip with stump exceeding 5" in length measured from tip of great trochanter but not beyond middle thigh	80
19	Amputation below middle thigh to $1\frac{1}{2}$ " below knee	60
20	Amputation below knee with stump exceeding $3\frac{1}{2}$ " but not exceeding 5"	50
21	Amputation below knee with stump exceeding 5"	40

SL No	Description of Injury	Percentage of loss of earning capacity
22	Amputation of one foot resulting in end-bearing	30
23	Amputation through one foot proximal to the metatarsal phalangeal joint	30
24	Loss of all toes of one foot through the metatarsal phalangeal joint	20

OTHER INJURIES

25	Loss of one eye, without complications, the other being normal	40
26	Loss of vision of one, without complications or disfigurement eye ball, the other being normal	30

LOSS OF

FINGERS OF RIGHT OR LEFT HAND

Index Finger

27	Whole	14
28	Two Phalanges	11
29	One phalanx	9
30	Goullotine amputation of tip without loss of bone	5

Middle Finger

31	Whole	12
32	Two phalanges	9
33	One phalanx	7
34	Goullotine amputation of tip without loss of bone	4

Right or Little Finger

35	Whole	7
36	Two Phalanges	6
37	One phalanx	5
38	Goullotine amputation of tip without loss of bone	2

TOES OF RIGHT OR LEFT FOOT

Great Toe

39	Through metatarso - phalangeal joint	14
40	Part, with some loss of bone	3
<i>Any other Toe</i>		
41	Through metatarso - phalangeal joint	7
42	Part, with some loss of bone	1

TWO TOES OF ONE FOOT, EXCLUDING GREAT TOE

43	Through metatarso - phalangeal joint	5
44	Part, with some loss of bone	2

THREE TOES OF ONE FOOT, EXCLUDING GREAT TOE

45	Through metatarso - phalangeal joint	6
46	Part, with some loss of bone	3

FOUR TOES OF ONE FOOT, EXCLUDING GREAT TOE

47	Through metatarso - phalangeal joint	9
48	Part, with some loss of bone	7

NOTE: Complete and permanent loss of the use of any limb or member referred to in this Schedule shall be deemed to be the equivalent of the loss of that limb or member.

CENTRAL ROAD RESEARCH INSTITUTE, NEW DELHI-110020

CRRI Budget 2005-06

HEAD OF EXPENDITURE	Plan	Non Plan	Total
1.PAY OF OFFICERS	40,000	200,000	240,000
2.PAY OF ESTABLISHMENT	35,000	140,000	175,000
3. DEARNESS PAY	40,000	170,000	210,000
Total (1+2+3)	120,000	510,000	630,000
3.1 SALARY LINKED ALLOW.			
b. DEARNESS ALLOWANCE	20,000	87,000	107,000
B. HRA/VCCA	25,000	105,000	130,000
C. I R			
D. CEA/TUTION FEE		0,700	0,700
E. EFFICIENCY BONUS			
G. BONUS	0,000	6,600	6,600
H. OSLA	4,500	16,200	20,700
TOTAL SLA	49,500	215,500	265,000
TOTAL SAL+ SLA	169,500	725,500	895,000
OTHER ALLOWANCES			
A. MED REIMB		10,000	10,000
B. CGHS		10,000	10,000
C. OTA		1,200	1,200
D. TRAVELLING ALLW			
a) IN INDIA		5,500	5,500
b) FOREIGN TRAVEL		1,000	1,000
SUB TOTAL TA	0,000	6,500	6,500
E. LTC		5,000	5,000
F. HONORARIUM		1,500	1,500
G.PROF. UPDATE ALLOW.		5,300	5,300
TOTAL OTHER ALLOW.	0,000	39,500	39,500
TOTAL SALARIES	169,500	765,000	934,500
4.CONTINGENCES		54,000	54,000
5.HRD	1,500	0,000	1,500
6.LAB MAINTENANCE		28,000	28,000
7.SQ MAINTENANCE+SAL.		16,000	16,000
8.CHEM & CONSUMABLES			
1) CHEMICAL	32,000		32,000
2) OTHER RESEARCH EXP			0,000
TOTAL CHEM & CONSUM	32,000	0,000	32,000
TOTAL REVENUE EXP	203,000	873,000	1076,000
B. LAB ASSETS			
1.LAND COST			
2.WORKS & SERVICES			0,000
3.APP & EQUIPCOMP	50,000		50,000
4.WORKSHOP MACHINERY			0,000
5.OFFICE EQUIPMENT	1,500		1,500
6.FURNITURE & FITTING	1,500		1,500
7.LIBRARY BOOKS	20,000		20,000
8.MODELS & EXHIBITS			0,000
9.VEHICLES	0,000		0,000
10. TOOLS & PLANTS			0,000
TOTAL (1+10)	73,000	0,000	73,000

STAFF QRS EX.

11. CAPITAL EXP (P702)			0.000
TOTAL EXP.(1+11)	73.000	0.000	73.000
TOT.CAP+REV. EXP.	275.000	873.000	1149.000
Networked Projects	36.835		36.835
TOTAL LAB BUDGET INCL(NWP)	312.835	873.000	1185.835
P80 CENTRAL ADMINISTRATION			
PENSION		180.000	180.000
CONV/COMP ADVANCE		4.000	4.000
HBA		5.000	5.000
TOTAL CENTRAL ADMIN	0.000	189.000	189.000
EMR		0.000	0.000